



Installing MacBook Pro 15" Unibody Late 2008 and Early 2009 Battery

Parts relevant to this guide

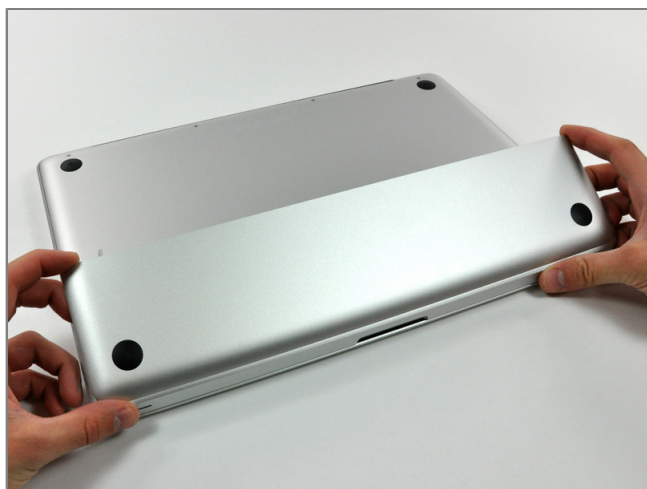
- [MacBook Pro 15" Unibody \(Late 2008/Early 2009\) Battery](#) (1)

Replacing the battery on a MacBook Unibody is an easy task.



Step 1 - Access Door

- With the case closed, place the Unibody top-side down on a flat surface.
- Depress the grooved side of the access door release latch enough to grab the free end. Lift the release latch until it is vertical.



Step 2

- The access door should now be raised enough to lift it up and out of the Unibody.



Step 3 - Battery

- Be sure the access door release latch is vertical before proceeding.
- Grab the translucent plastic tab and pull the battery up and out of the Unibody.
- If the latch is depressed it will lock the battery in place.



To reassemble your device, follow these instructions in reverse order.

This document was last generated on Dec 14, 2010.