



Installing MacBook Pro 15" Unibody Late 2008 and Early 2009 Left Speaker

Tools used in this guide

- [Phillips #00 Screwdriver](#) (1)
- [Spudger](#) (1)

Parts relevant to this guide

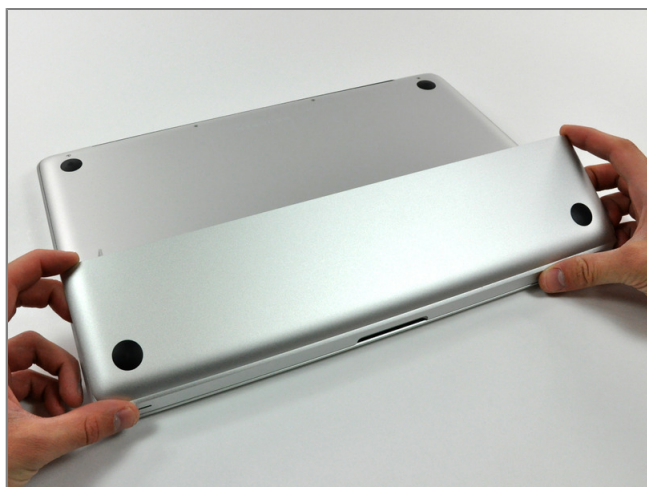
- [MacBook Pro 15" Unibody \(Late 2008/Early 2009\) Left Speaker](#) (1)

Restore balanced sound to your laptop by replacing the left speaker.



Step 1 - Access Door

- With the case closed, place the Unibody top-side down on a flat surface.
- Depress the grooved side of the access door release latch enough to grab the free end. Lift the release latch until it is vertical.



Step 2

- The access door should now be raised enough to lift it up and out of the Unibody.



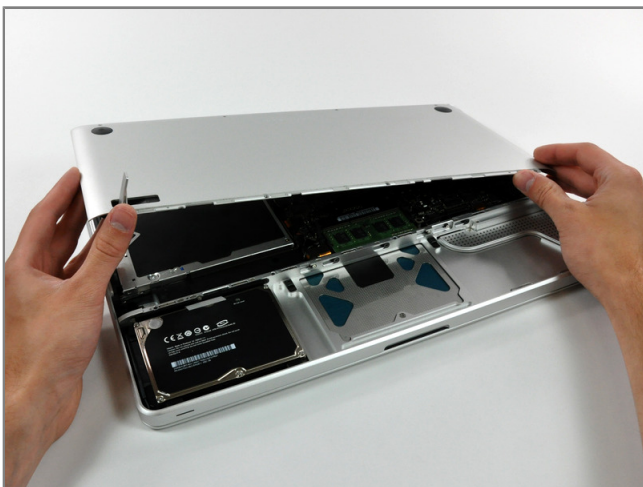
Step 3 - Battery

- Be sure the access door release latch is vertical before proceeding.
- Grab the translucent plastic tab and pull the battery up and out of the Unibody.
- If the latch is depressed it will lock the battery in place.



Step 4 - Lower Case

- Remove the following eight screws securing the lower case to the chassis:
 - One 5.4 mm Phillips screw.
 - Three 14 mm Phillips screws.
 - Four 3.5 mm Phillips screws.



Step 5

- Using both hands, lift and remove the lower case off the upper case.



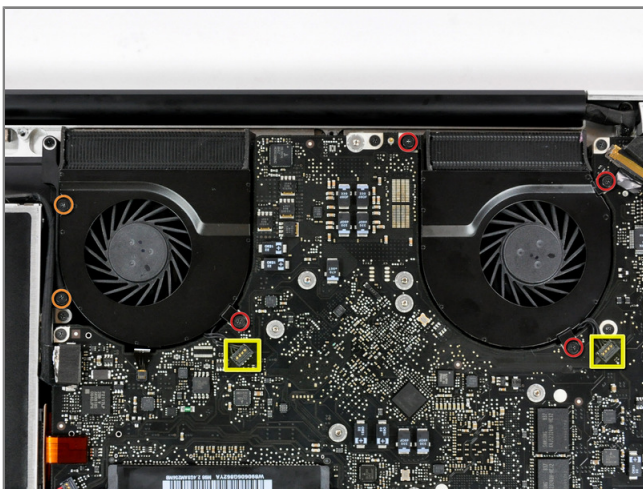
Step 6 - Mid Wall

- Remove the following 5 screws securing the mid wall to the upper case:
 - Three 10.5 mm Phillips screws.
 - Two 3.7 mm Phillips screws.



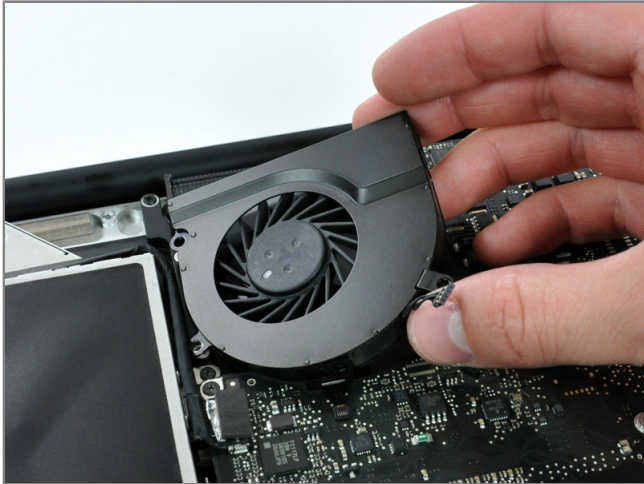
Step 7

- Lift the mid wall out of the upper case.



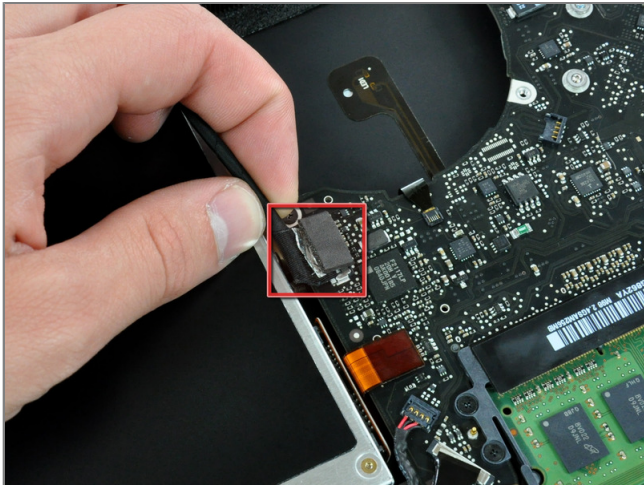
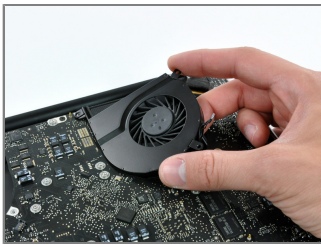
Step 8 - Logic Board

- Remove the following six screws securing both the right fan and the left fan to the logic board:
 - Four 3.5 mm Phillips screws.
 - Two 3.2 mm Phillips screws.
- Use a spudger to pry both the right fan and left fan connectors straight up off the logic board.



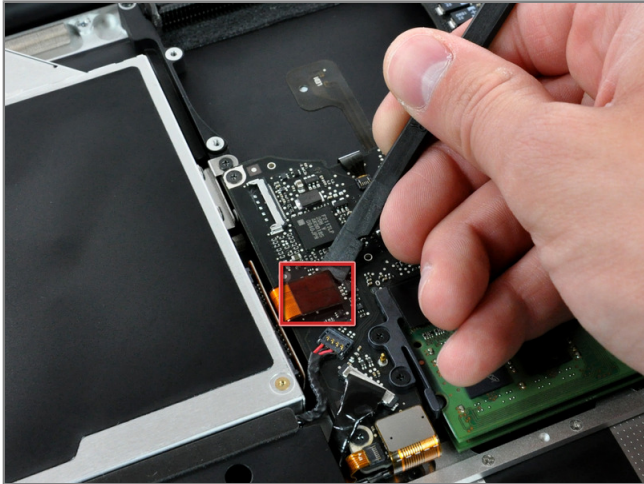
Step 9

- Lift both fans out of the upper case.



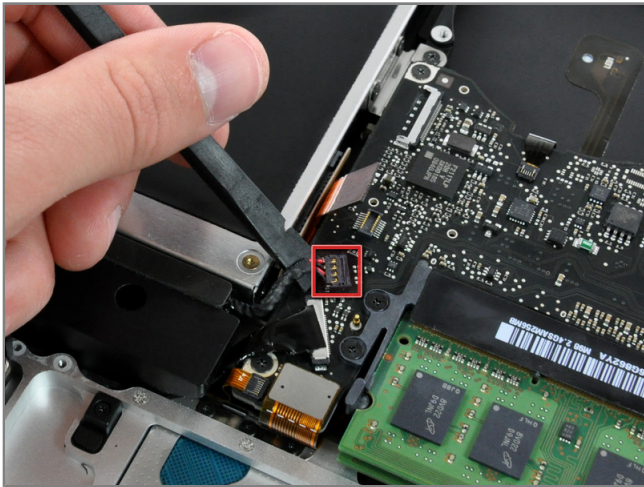
Step 10

- Disconnect the camera cable by pulling the male end straight away from its socket.



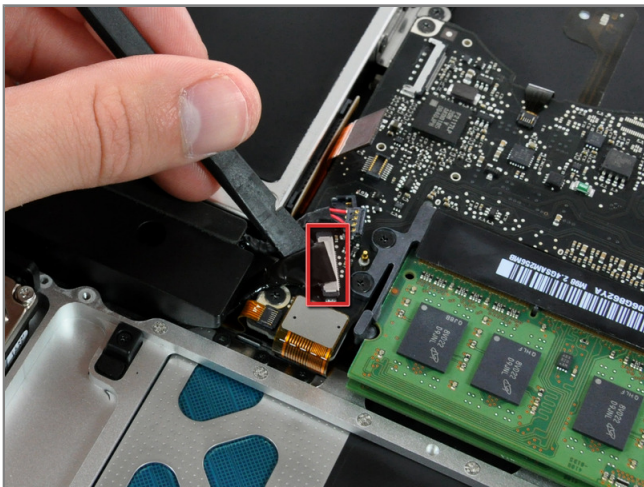
Step 11

- Use a spudger to pry the optical drive connector straight up off the logic board.



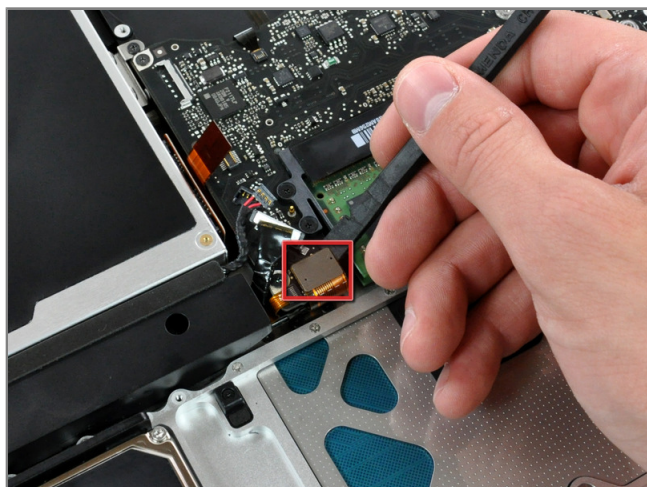
Step 12

- If necessary, peel off the foam bumper covering the subwoofer connector.
- Using the flat end of a spudger, pry the subwoofer connector straight up off the logic board.
- Be very careful. This connector is delicate, and can be easily broken off the logic board.



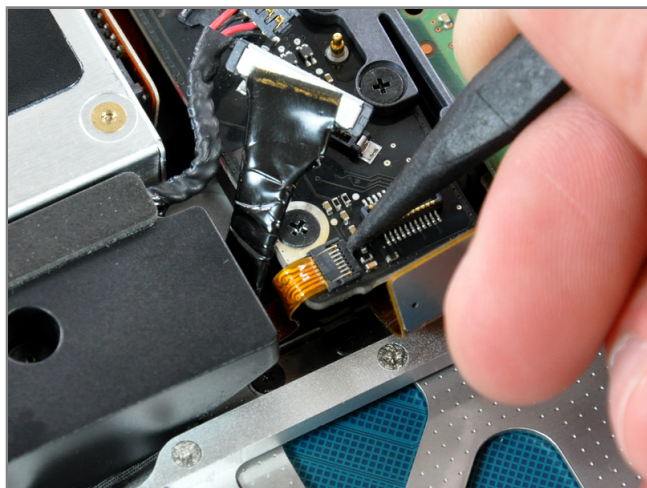
Step 13

- Use the flat end of a spudger to pry the hard drive cable connector straight up off the logic board.



Step 14

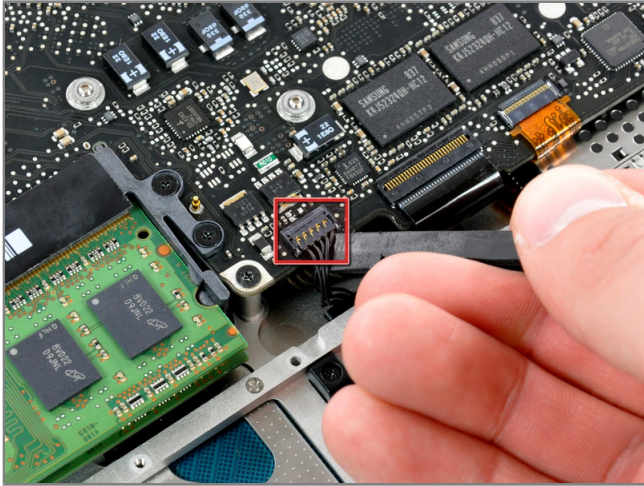
- Use a spudger to pry the trackpad connector straight up off the logic board.



Step 15

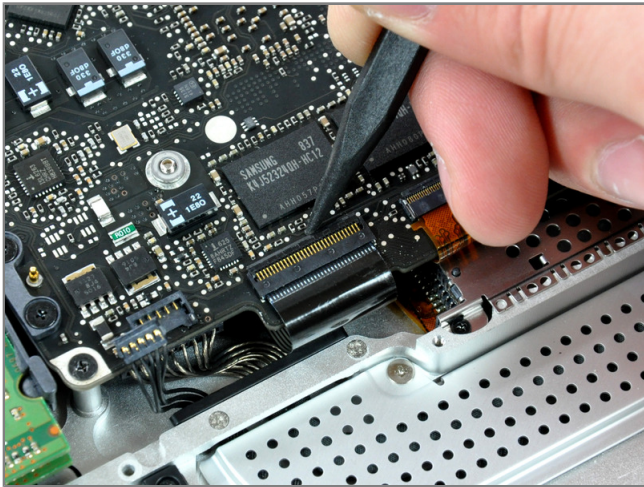
- Using the tip of a spudger, flip up the IR/sleep LED ribbon cable retaining flap.
- Pull the IR/sleep LED ribbon cable straight out of its socket.





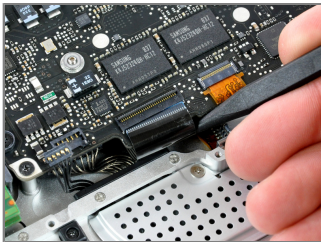
Step 16

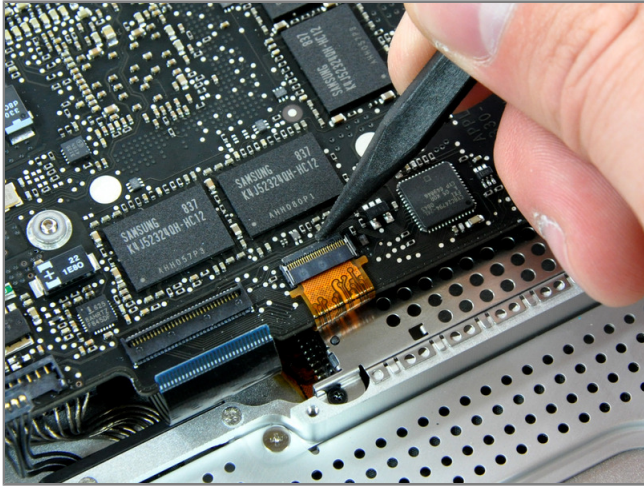
- Using the flat end of a spudger, pry the battery indicator light connector straight up off the logic board.



Step 17

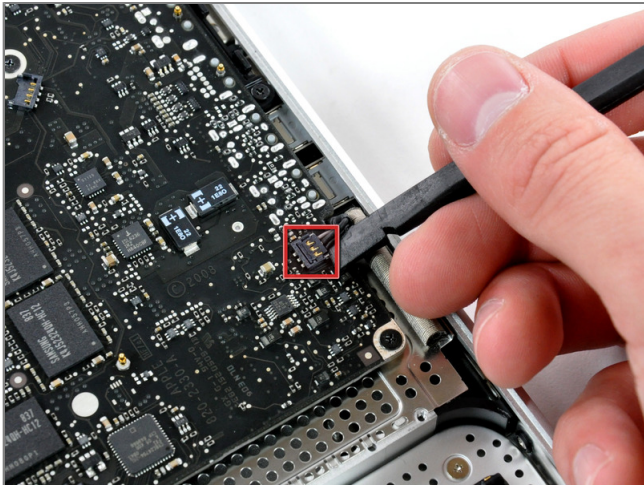
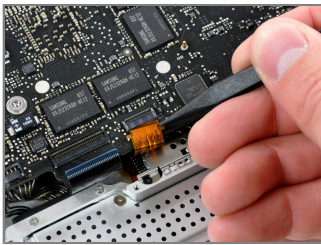
- Using the tip of a spudger, flip up the keyboard ribbon cable retaining flap.
- Pull the keyboard ribbon cable straight out of its socket.





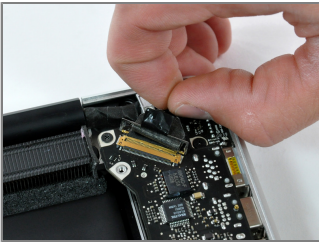
Step 18

- Using the tip of a spudger, flip up the express card cage ribbon cable retaining flap.
- Pull the express card cage ribbon cable straight out of its socket.



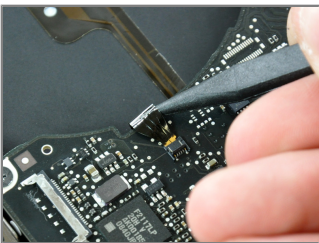
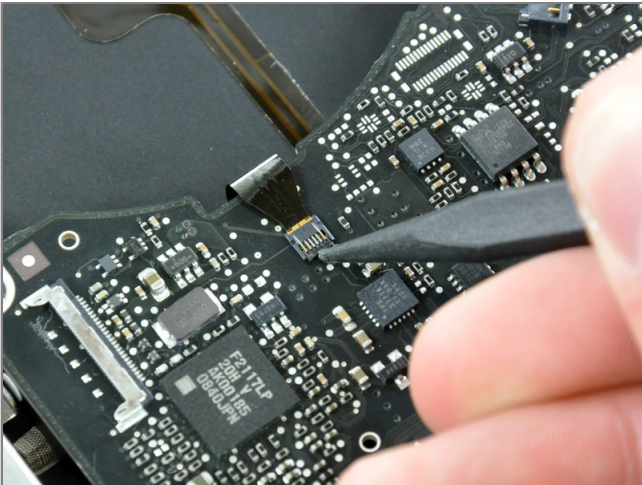
Step 19

- Using the flat end of a spudger, pry the microphone cable connector straight up off the logic board.



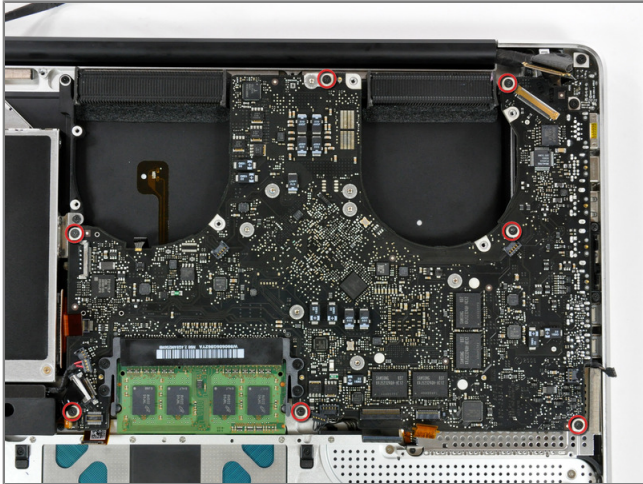
Step 20

- Grab the plastic pull tab secured to the display data cable lock and rotate it toward the DC-in side of the computer.
- Pull the display data cable connector straight away from its socket.
- When disconnecting the display data cable, do not pull on the black tab secured to the cable lock. We recommend wiggling the cable while applying tension to slowly "walk" the connector out of its socket.



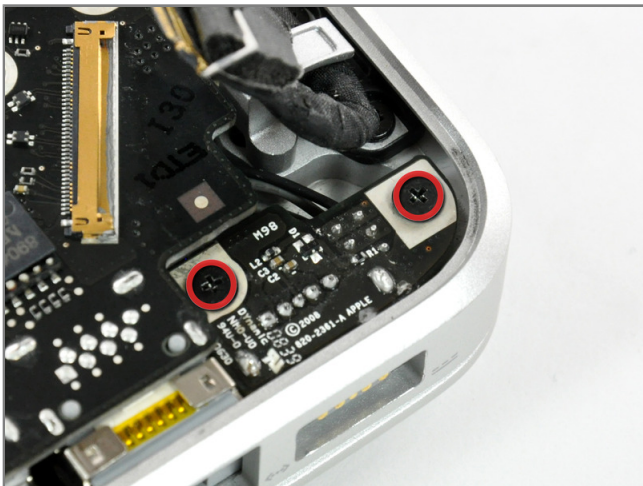
Step 21

- Locate the keyboard backlight ribbon cable (near the left fan space).
- Using the tip of a spudger, flip up the keyboard backlight ribbon cable retaining flap.
- Pull the keyboard backlight ribbon cable straight out of its socket.



Step 22

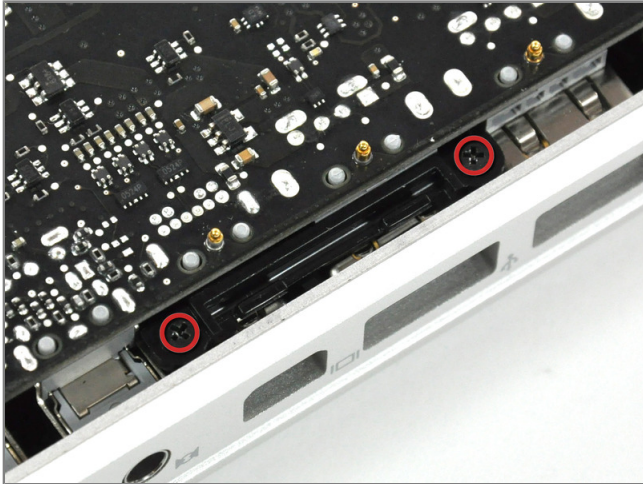
- Remove seven 3.2 mm Phillips screws securing the logic board to the upper case.
- Do not remove the logic board yet! There are connectors attached to the underside of the logic board that must first be disconnected.



Step 23

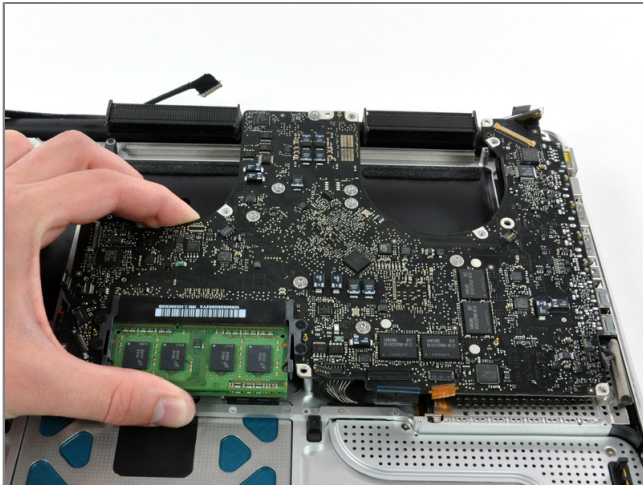
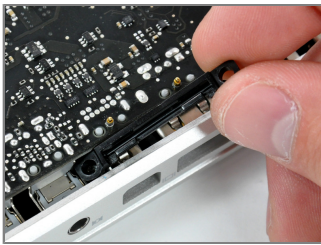
- Remove two 7 mm Phillips screws securing the DC-in board to the upper case.
- Note: This step is not completely necessary, but it will make it easier to disconnect the cable that is connected to the DC-in board.





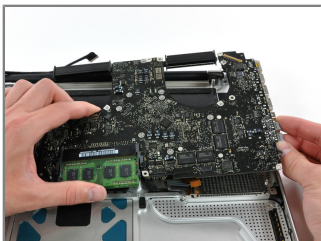
Step 24

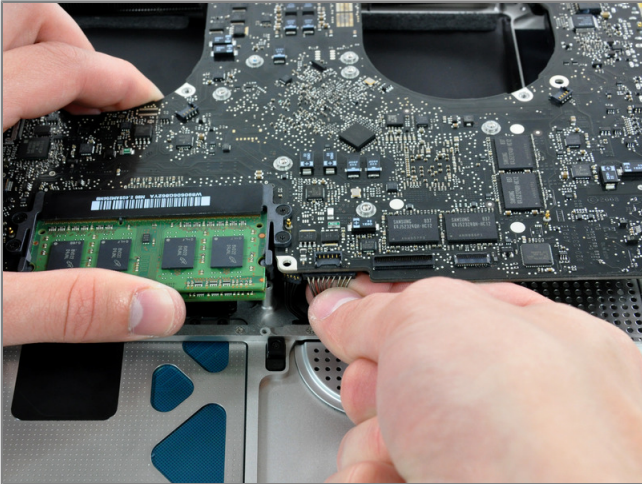
- Remove two 3.5 mm Phillips screws securing the bottom case clip to the upper case.
- Lift the bottom case clip out of the upper case.
- Some MacBook Pro Unibodies do not have a bottom case clip and do not require this step.



Step 25

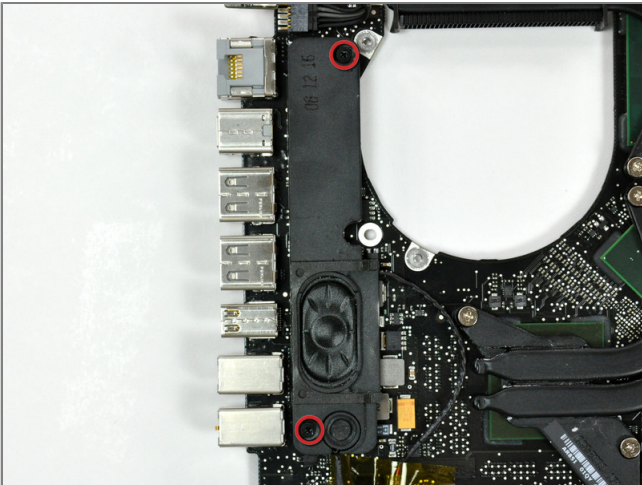
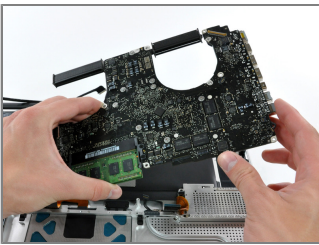
- Carefully lift the logic board assembly from the left side and work it out of the upper case, minding the port side that may get caught during removal.
- Do not entirely remove the logic board yet!
- Ensure that the logic board is free from all connections to the upper case (except the battery connector) before proceeding.





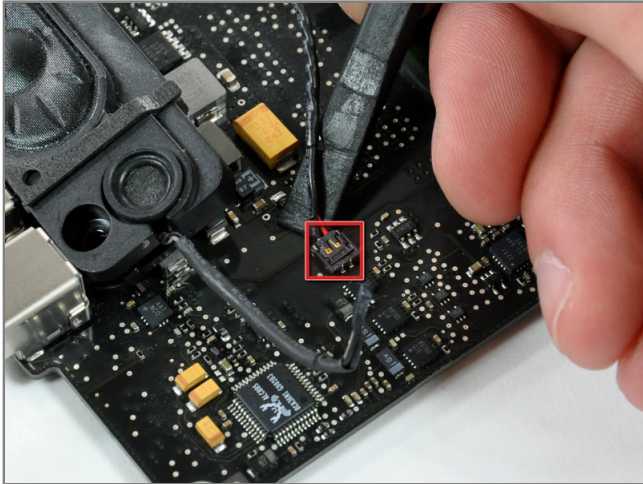
Step 26

- Lift the logic board enough to grab the battery connector and pull it straight away from its socket on the logic board.
- Lift the logic board assembly out of the upper case.



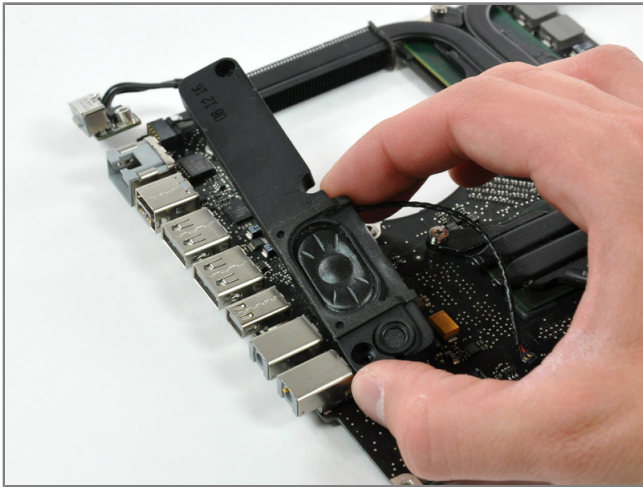
Step 27 - Left Speaker

- Remove two 5 mm Phillips screws securing the left speaker to the logic board.



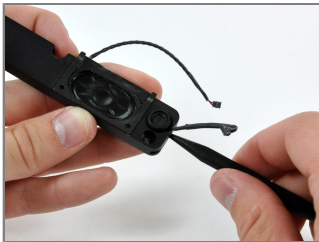
Step 28

- If necessary, peel up the orange Kapton tape covering the left speaker connector.
- Use the flat end of a spudger to pry the left speaker connector up off the logic board.



Step 29

- Lift the left speaker assembly out of the logic board.
- Deroute the microphone cable from the channel in the left speaker and use the tip of a spudger to dislodge the microphone from its housing within the left speaker.



To reassemble your device, follow these instructions in reverse order.

This document was last generated on Dec 14, 2010.