



Installing MacBook Pro 15" Unibody Late 2008 and Early 2009 Lower Case

Tools used in this guide

- [Phillips #00 Screwdriver](#) (1)

Parts relevant to this guide

- [MacBook Pro 15" Unibody \(Late 2008/Early 2009\) Lower Case](#) (1)

Replace the aluminum bottom case in a MacBook Pro Unibody.



Step 1 - Access Door

- With the case closed, place the Unibody top-side down on a flat surface.
- Depress the grooved side of the access door release latch enough to grab the free end. Lift the release latch until it is vertical.



Step 2

- The access door should now be raised enough to lift it up and out of the Unibody.



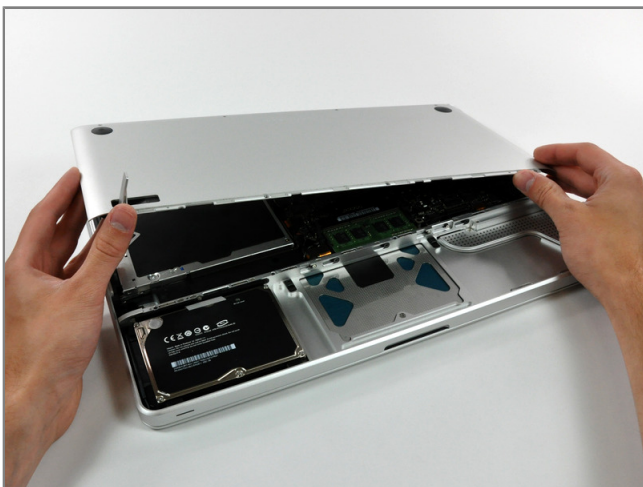
Step 3 - Battery

- Be sure the access door release latch is vertical before proceeding.
- Grab the translucent plastic tab and pull the battery up and out of the Unibody.
- If the latch is depressed it will lock the battery in place.



Step 4 - Lower Case

- Remove the following eight screws securing the lower case to the chassis:
 - One 5.4 mm Phillips screw.
 - Three 14 mm Phillips screws.
 - Four 3.5 mm Phillips screws.



Step 5

- Using both hands, lift and remove the lower case off the upper case.

To reassemble your device, follow these instructions in reverse order.

This document was last generated on Dec 14, 2010.