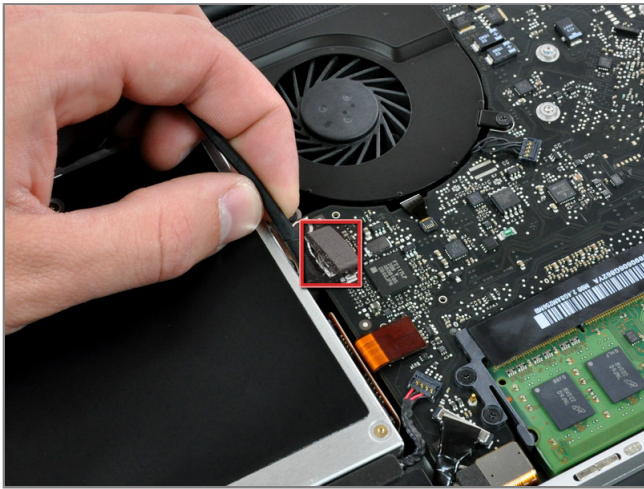




Installing MacBook Pro 15" Unibody Late 2008 and Early 2009 Optical Drive



Step 1 - Optical Drive

- Disconnect the camera cable by pulling the male end straight away from its socket.



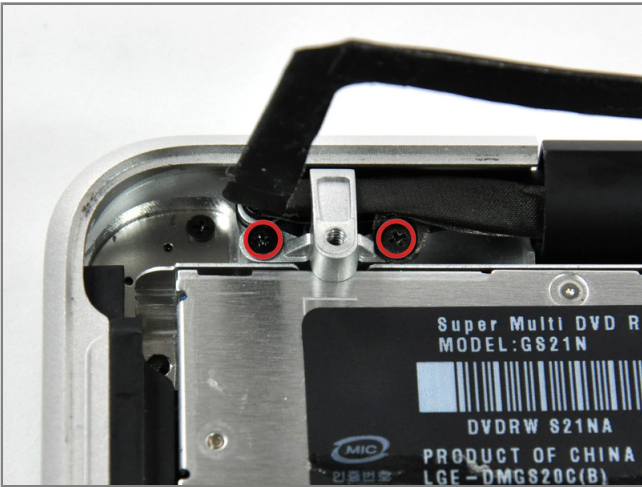
Step 2

- Deroute the camera data cable from the channel in the optical drive.



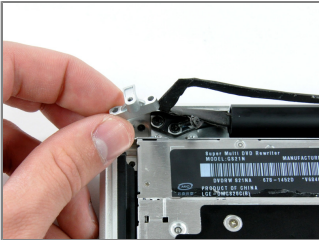
Step 3

- Use a spudger to pry the optical drive connector straight up off the logic board.



Step 4

- Remove two 8 mm Phillips screws securing the camera cable bracket to the upper case.
- The rightmost screw may remain captive in the camera cable.
- Lift the camera cable bracket out from the upper case.





Step 5

- Remove the following three Phillips screws securing the optical drive to the upper case:
 - One 3.5 mm Phillips screw.
 - Two 2.5 mm Phillips screws.



Step 6

- Lift the optical drive from its left edge and pull it out of the computer.