



# Installing MacBook Pro 15" Unibody Late 2008 and Early 2009 Subwoofer & Right Speaker

## Tools used in this guide

- [Phillips #00 Screwdriver](#) (1)
- [Spudger](#) (1)

## Parts relevant to this guide

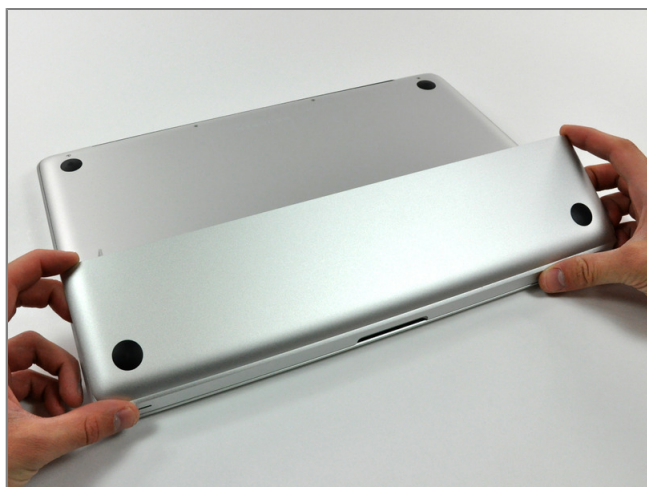
- [MacBook Pro 15" Unibody \(Late 2008/Early 2009\) Subwoofer/Right Speaker](#) (1)

Restore sound to your laptop by replacing the subwoofer and right speaker.



### **Step 1 - Access Door**

- With the case closed, place the Unibody top-side down on a flat surface.
- Depress the grooved side of the access door release latch enough to grab the free end. Lift the release latch until it is vertical.



### **Step 2**

- The access door should now be raised enough to lift it up and out of the Unibody.



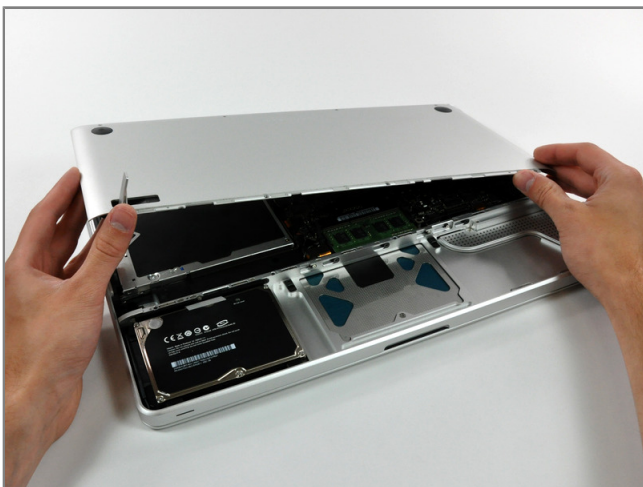
### Step 3 - Battery

- Be sure the access door release latch is vertical before proceeding.
- Grab the translucent plastic tab and pull the battery up and out of the Unibody.
- If the latch is depressed it will lock the battery in place.



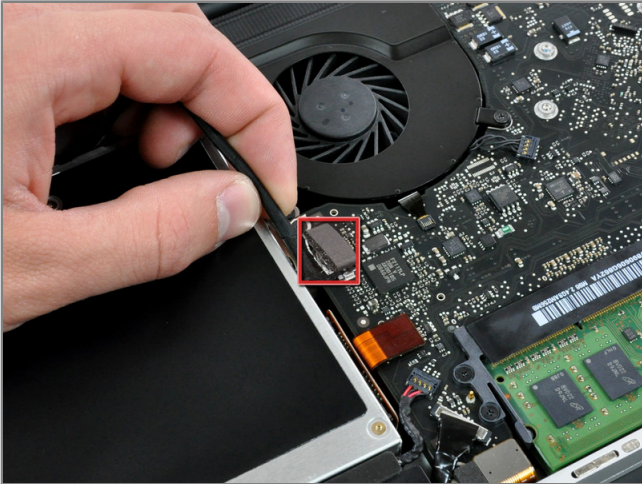
### Step 4 - Lower Case

- Remove the following eight screws securing the lower case to the chassis:
  - One 5.4 mm Phillips screw.
  - Three 14 mm Phillips screws.
  - Four 3.5 mm Phillips screws.



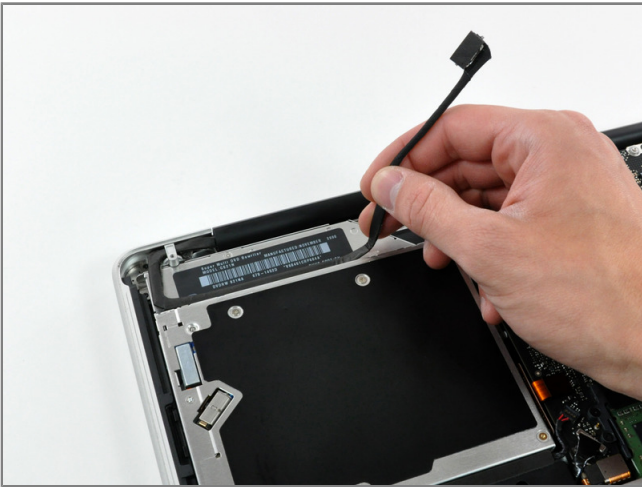
### Step 5

- Using both hands, lift and remove the lower case off the upper case.



### Step 6 - Optical Drive

- Disconnect the camera cable by pulling the male end straight away from its socket.



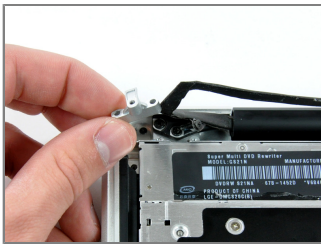
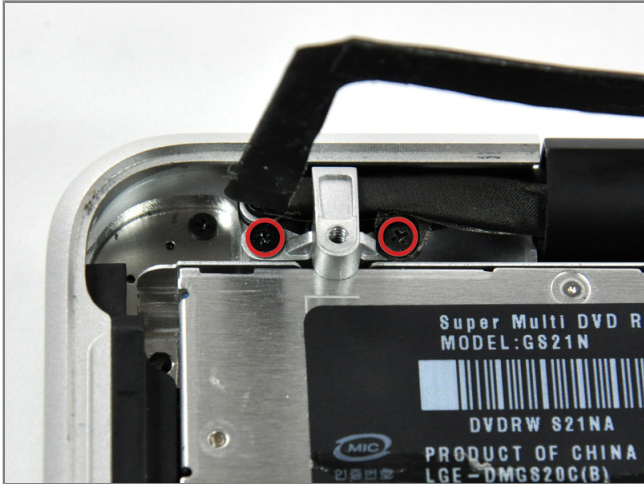
### Step 7

- Deroute the camera data cable from the channel in the optical drive.



### Step 8

- Use a spudger to pry the optical drive connector straight up off the logic board.



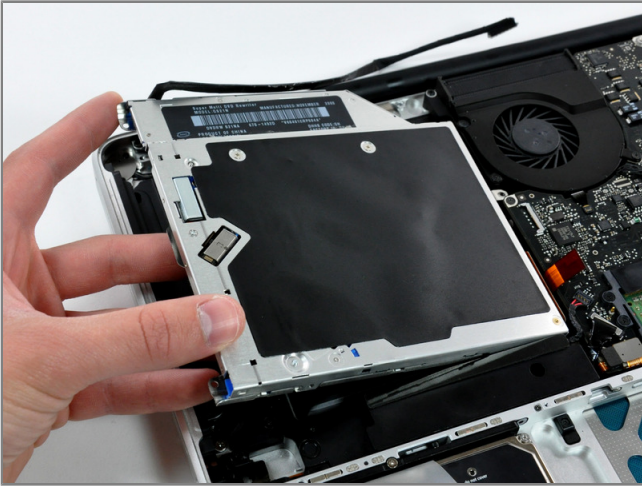
### Step 9

- Remove two 8 mm Phillips screws securing the camera cable bracket to the upper case.
- The rightmost screw may remain captive in the camera cable.
- Lift the camera cable bracket out from the upper case.



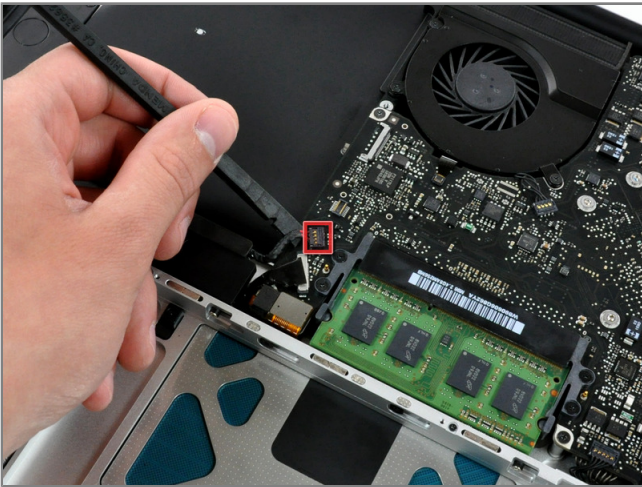
### Step 10

- Remove the following three Phillips screws securing the optical drive to the upper case:
  - One 3.5 mm Phillips screw.
  - Two 2.5 mm Phillips screws.



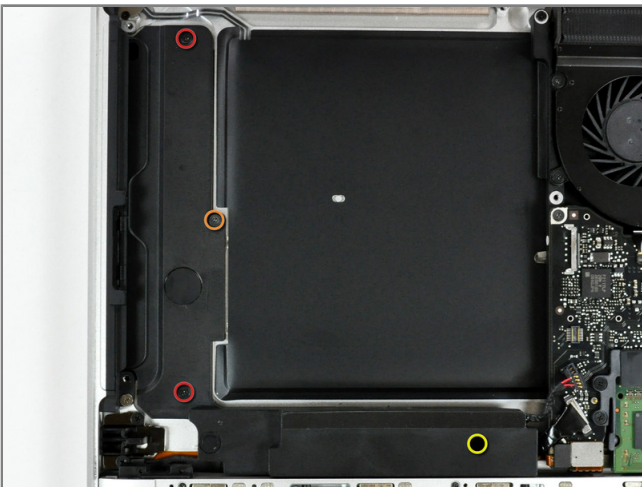
### Step 11

- Lift the optical drive from its left edge and pull it out of the computer.



### Step 12 - Subwoofer & Right Speaker

- Using the flat end of a spudger, pry the subwoofer connector straight up off the logic board.



### Step 13

- Remove the following four screws securing the subwoofer and right speaker to the upper case:
  - Two 3.2 mm Phillips screws.
  - One 2.6 mm Phillips screw.
  - One 5 mm Phillips screw.



### **Step 14**

- Lift the subwoofer and right speaker assembly out of the upper case.

To reassemble your device, follow these instructions in reverse order.

This document was last generated on Dec 14, 2010.